



shape your light

A brand-new modular lighting
system made from bamboo





The designer Oliver Walter is a German architect living and working in Helsinki. With his participation in outstanding architectural, lighting and art projects he gained a profound insight into the Finnish design methodology.

Wood and bamboo as well as the LED light source have captured his special interest. Sustainable design and production methods are very close to his heart.

In Oliver ´s view artificial light should not be used with a simple switch but should instead respond to the user ´s intuitive and nuanced interaction.



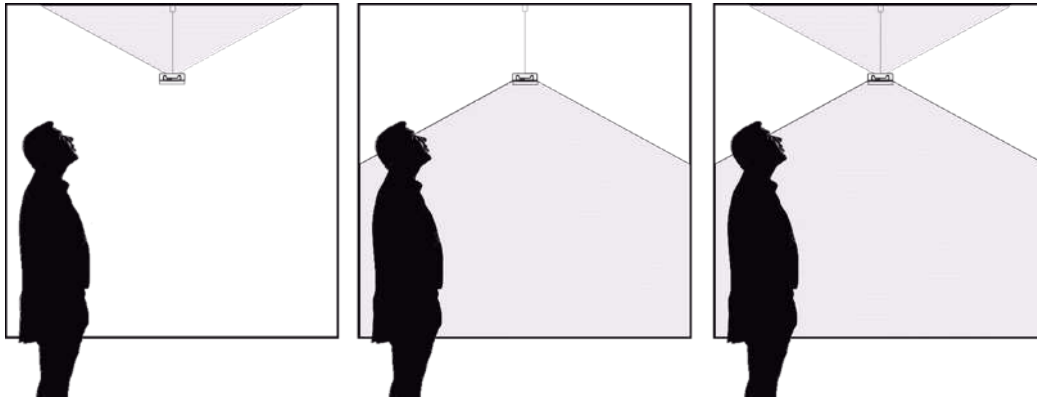


*“ LUOlight is made in Finland from where
it got its inspiration “*

Inspiration

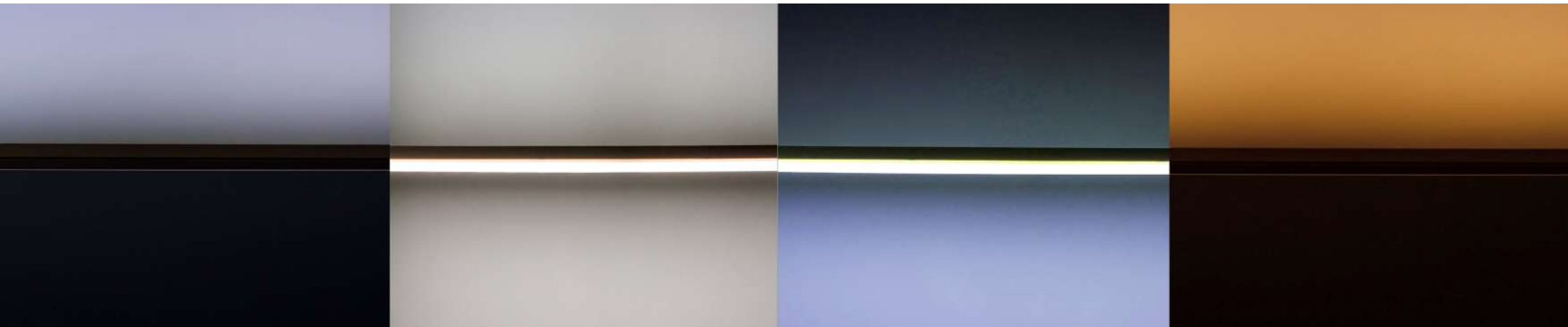
LUOlight reminds of natural lighting phenomena in the Northern skies. In winter times polar lights swipe the firmament with their curved formations. Day light during a clear summer day in Finland changes dramatically from an intense cool brightness at noon to a warm golden glow at dusk that reflects in tranquil

surfaces of the many lakes. LUOlight brings the effects of natural lighting into the confinements of our urban interior spaces. Warm and cool light has a significant influence on our biorhythm. Cool light increases vitality and reduces fatigue, warm light, on the other hand, creates a sense of comfort. LUOlight can create both.



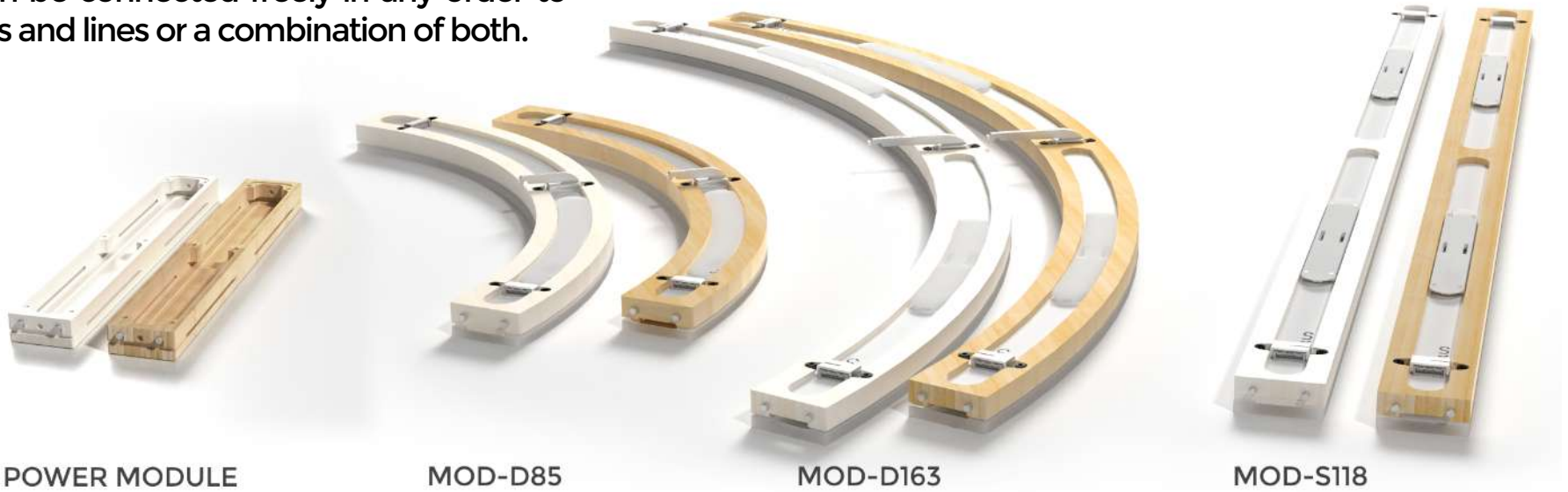
Lighting

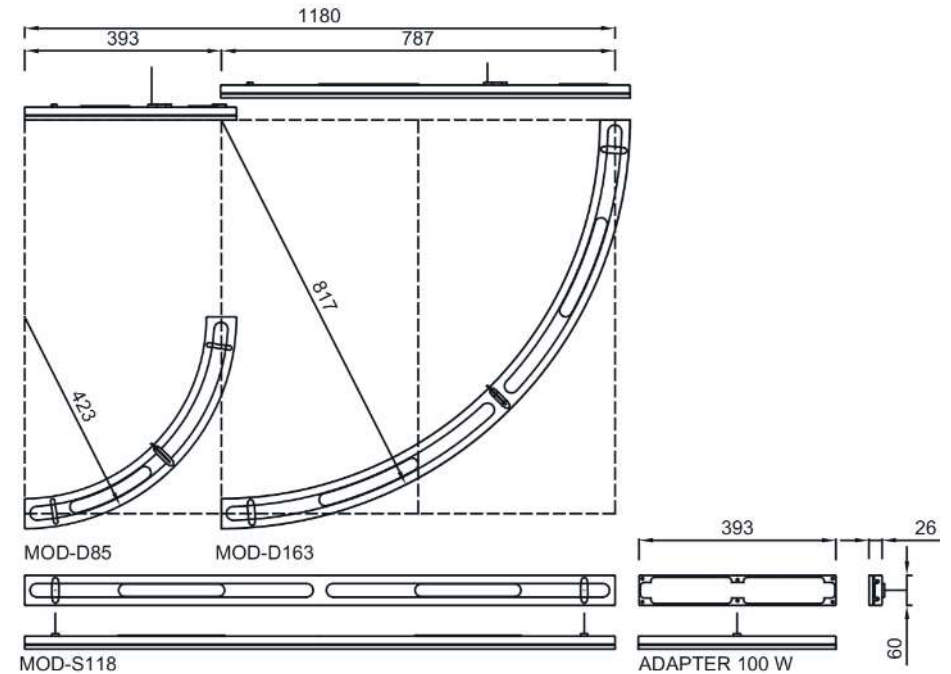
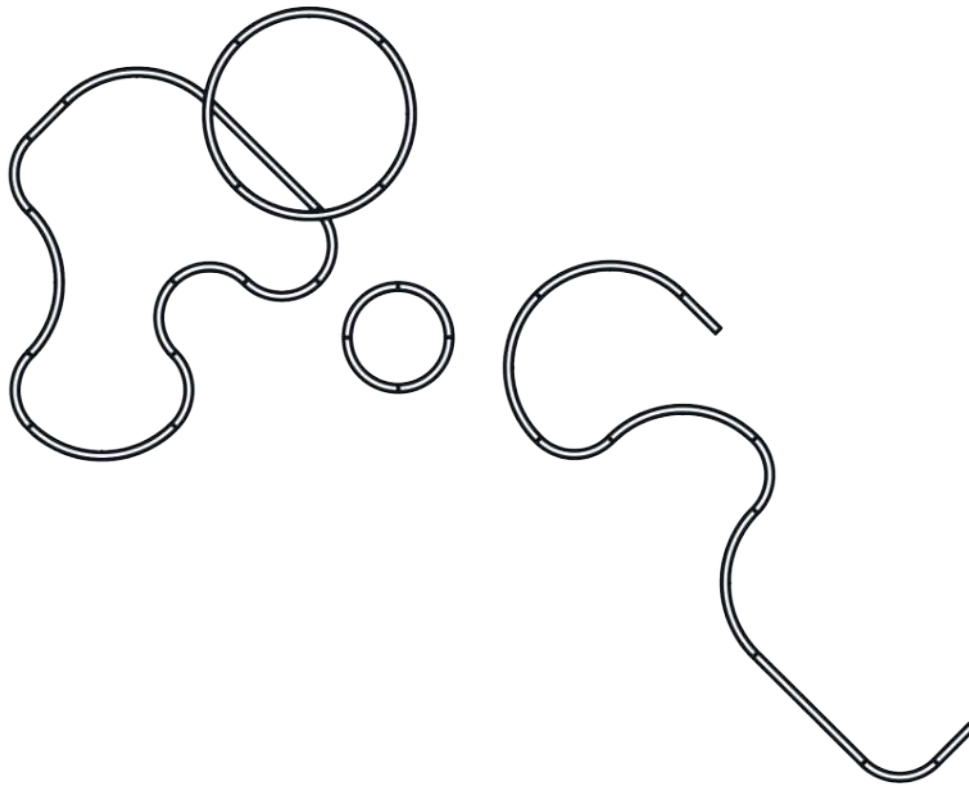
LUOlight has four independent light sources. Cold and warm white light can be directed up- or downwards. Each of the components can be dimmed and mixed separately. For example, a ceiling can be illuminated to create a warm mystical effect or the down-light can be dimmed up to supply full functional lighting.



Modularity

The LUOlight system is modular in all its parts. Straight and curved modules can be connected freely in any order to shape circles and lines or a combination of both.





Creativity

LUOlight gives architects and interior designers an effective tool to complement their plan with a highly modern, flexible and sustainable lighting solution. LUOlight will unleash your creativity to freely shape light in any surrounding: homes, offices, educational facilities, gastronomy etc

“ we use bamboo, an unparalleled efficient and sustainable natural resource “

Sustainability

We use certificated bamboo panels from plants that are harvested after just five years of growth. The material is carbon negative which means that the production binds CO₂ from the atmosphere.

Each of the LUOlight components can be easily exchanged for future updates. The modules are light in weight and compact in volume. Both has a positive impact on shipping and storage costs.



carbon footprint over life cycle (kg CO₂ eq/m³ material)





“designing with LUOlight is great fun”

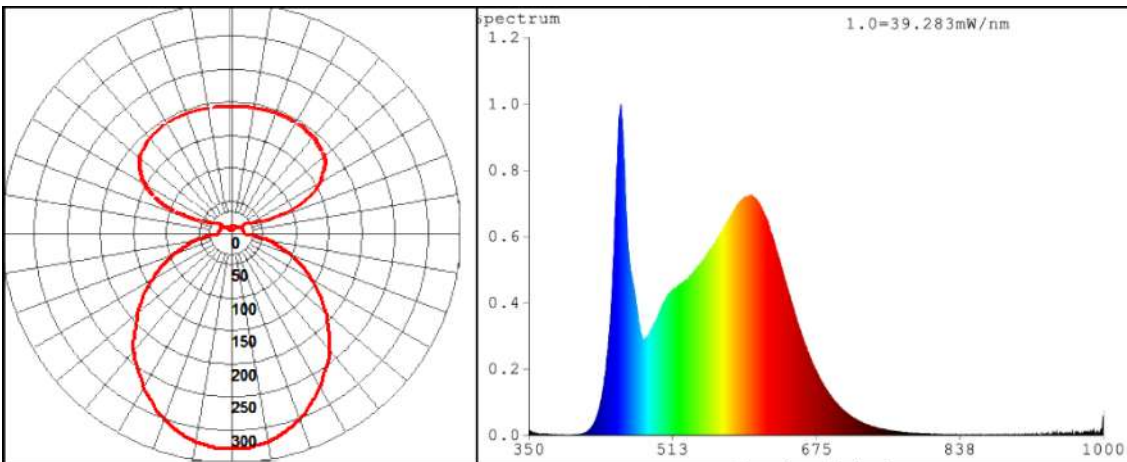


Planning tools

Scale models and parametric digital 3D-files support designers in their planning work and make customer presentations memorable highlights. The digital libraries can be freely downloaded from our [website](#).

“accurate lighting calculations”

DIALux



Photometry

The light distribution of each of LUOlight's modules has been measured in the laboratory, the Photometric files are available for download. Lighting planners can verify that the recommended illumination values on the surfaces are matched. Glare indices (UGR) values can be calculated as well.

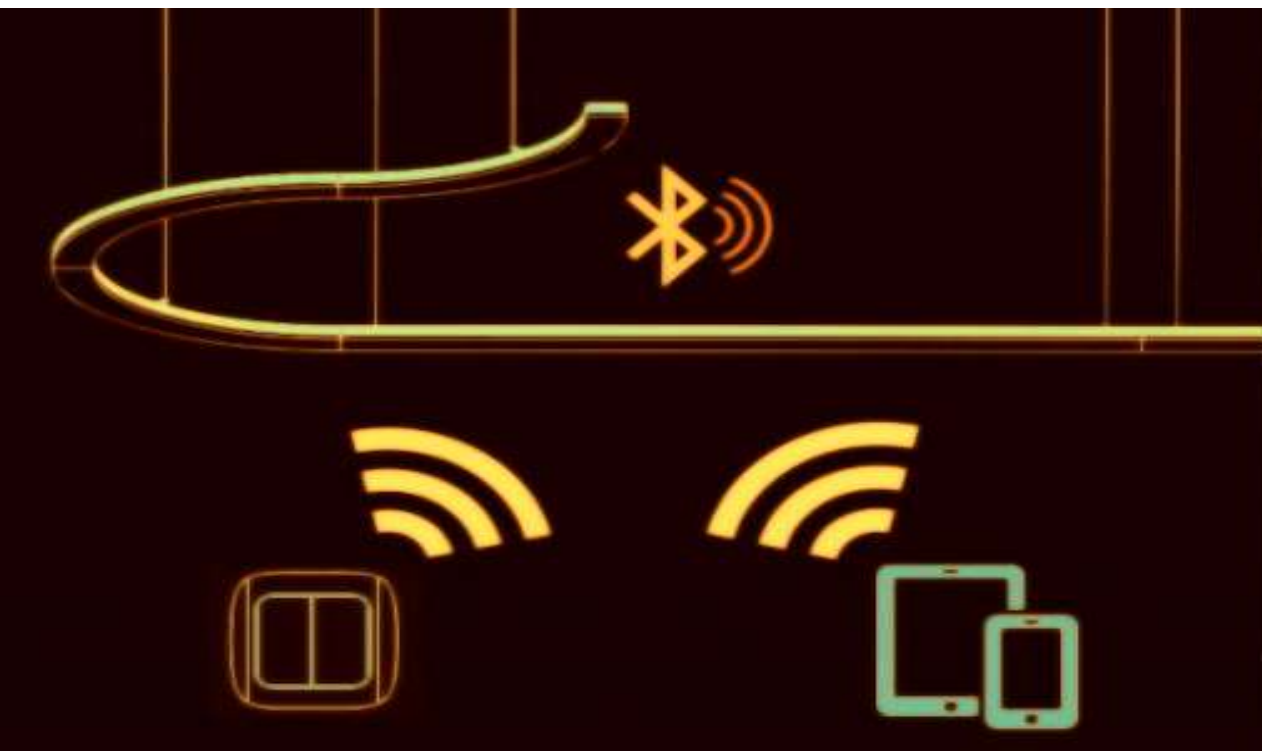


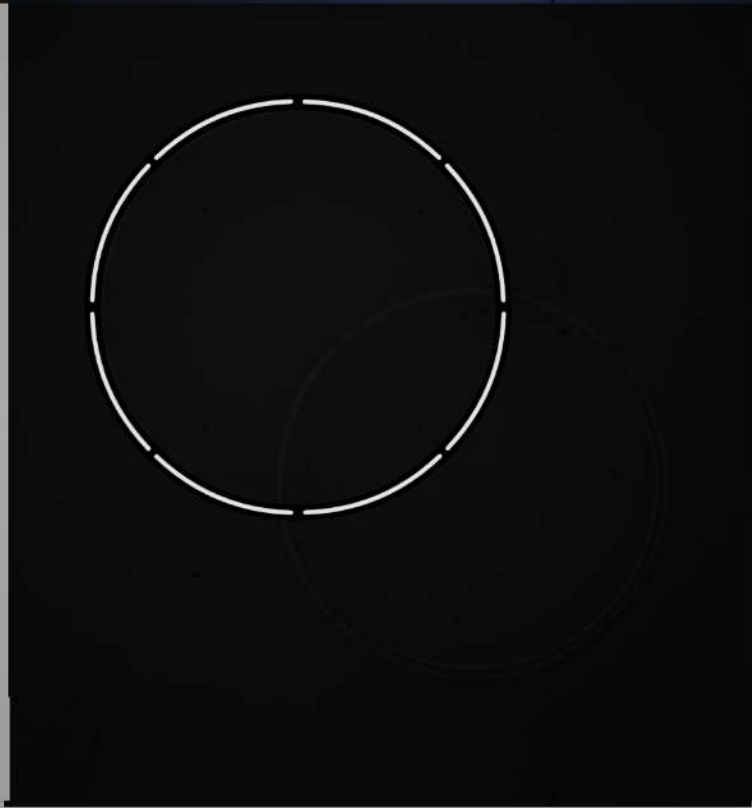
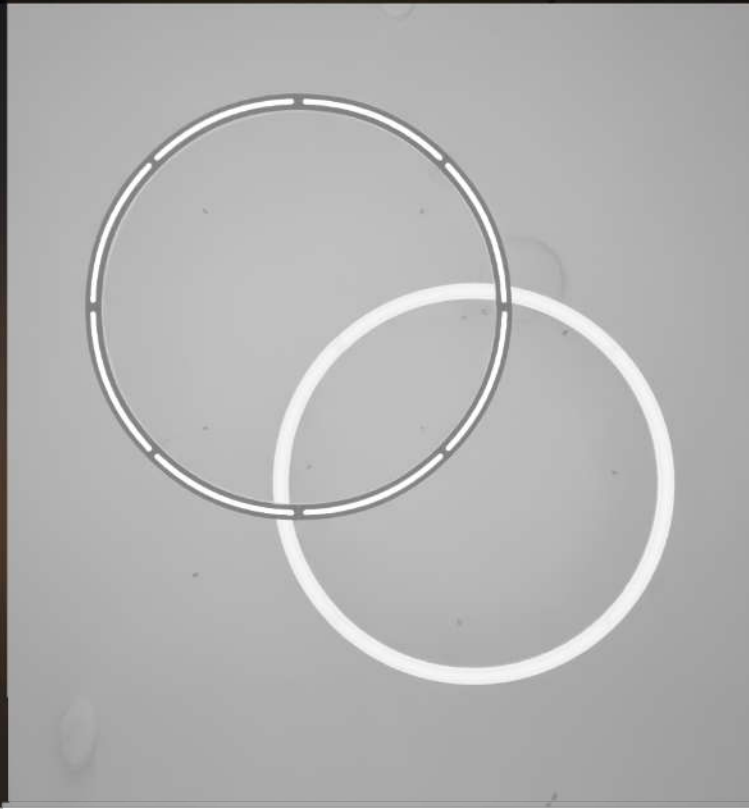
Control

LUOlight is equipped with CASAMBI, a state-of-the-art lighting control solution that is based on Nokia's wireless and low energy Bluetooth technology. LUO systems work as mesh networks in which individual luminaire combinations can be controlled separately.

LUOlight can either be controlled from handheld devices (cellphones/pads/smart-watches) or via Bluetooth wall switches. No complicated wiring is needed. It is also possible to store scenes or animate light over time. The system is also compatible with Dali controlled installations.

“ LUOlight is committed to giving the highest possible lighting comfort to its users “



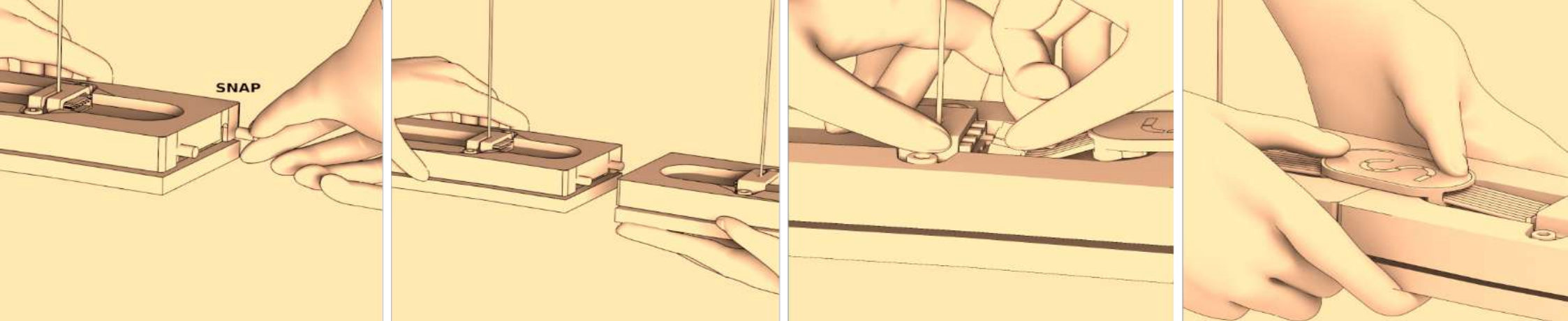




Optics LUOlight has exchangeable optical modules that are simply clipped on to the main bamboo part.

The slit module that is made from bamboo focuses the light with a narrow beam downwards. This optic can be used to create sharply lit areas on the floor to define zones for guidance.

The diffuse optics made from acrylics disperses the light evenly to all directions. It creates soft lighting without glare. This optics can be used for general functional lighting.



Installation

LUOlight systems can be installed with ease by just one person. The modules are joined together with magnets. Inter-connector carriages connect the LED lamps with one another. No special technical knowledge is needed.

*“ setting LUOlight up is as simple
as a child ´s play “*





SS





Contact

Webpage: luo-light.com

info@luo-light.com

Myllypadontie 14F

00920 Helsinki, Finland

tel +358 503789468

Specifications

Input Voltage	country specific
Voltage (DCV)	24
Power (W)	9 -120
CRI	80 (90 possible)
Nominal CCT (K)	2700-6800
IP rating	20
Lm/ W	145
Lighting control	Bluetooth, Casambi